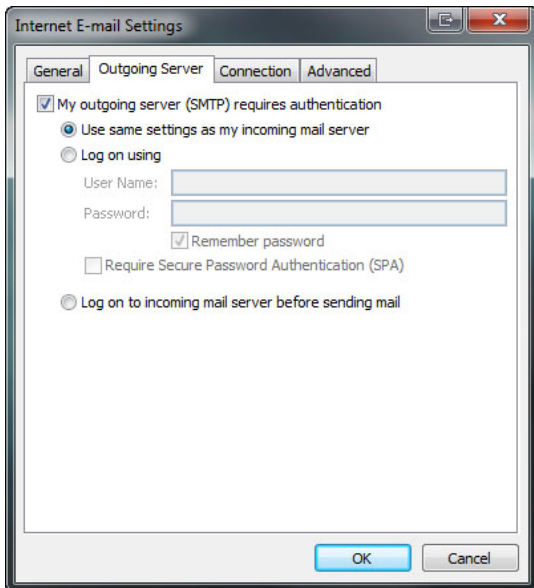


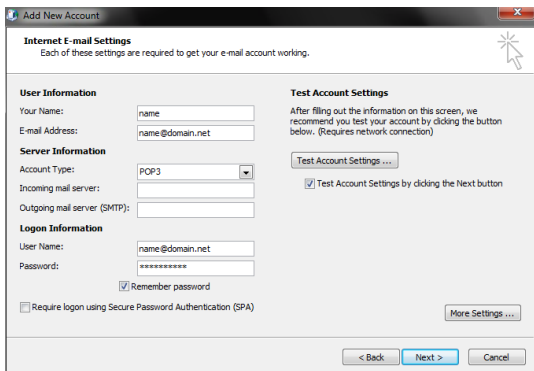
Configuring POP3 in Outlook 2013



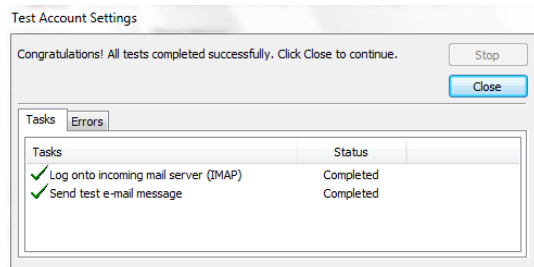


10) Select the Outgoing Server tab.

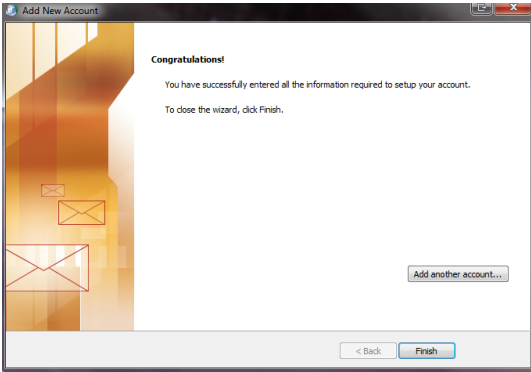
Click *My outgoing server (SMTP) requires authentication*.
 Check *Use same settings as my incoming mail server*, then click **OK**.



11) Click on Test Account Settings.



When the test is successful click **Close**.



When you click next, Outlook will run the task again. Allow the process to complete then select **Finish**.