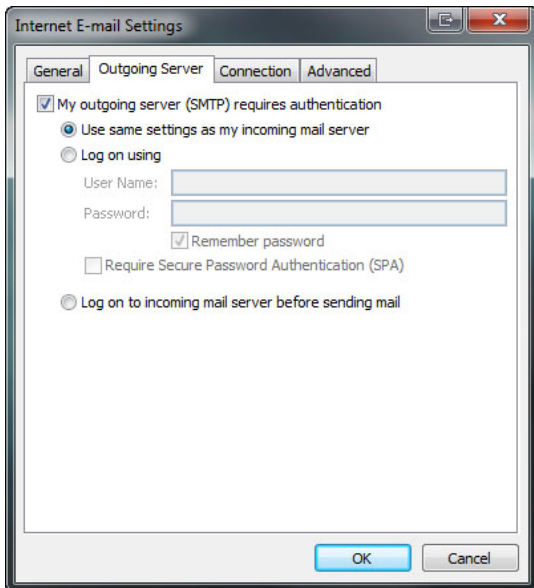


# Configuring POP3 in Outlook 2010



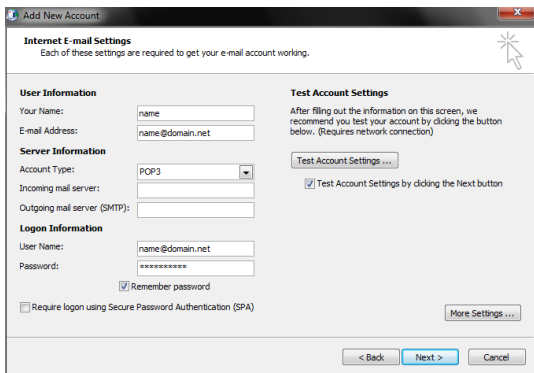




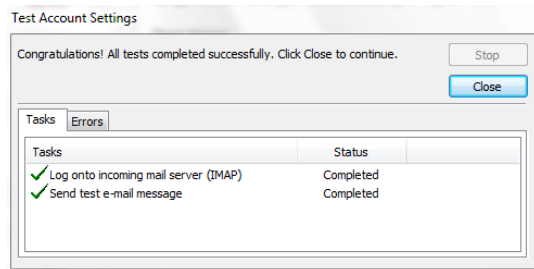


**10) Select the Outgoing Server tab.**

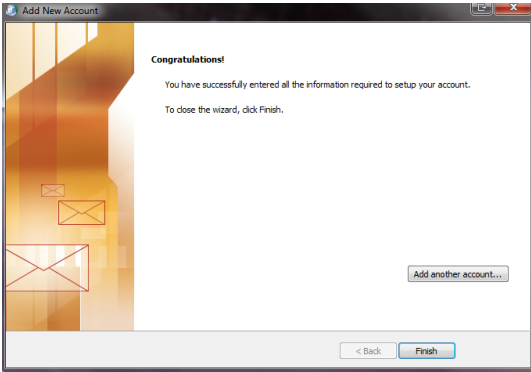
Click *My outgoing server (SMTP) requires authentication*.  
Check *Use same settings as my incoming mail server*, then click **OK**.



**11) Click on Test Account Settings.**



When the test is successful click **Close**.



When you click next, Outlook will run the task again. Allow the process to complete then select **Finish**.